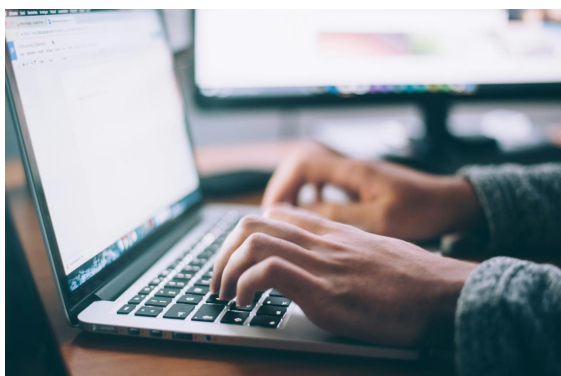


## Cybersecurity Corner

It's nearly impossible to remember passwords for the amount of online accounts most people are using. To manage this, many are choosing to use password managers like Roboform or LastPass. A password manager is a software application that securely stores and manages your passwords in an encrypted "vault," accessible with a single master password. Unfortunately, phishing campaigns are targeting popular password management systems.

Some of the phishing attempts claim the password manager has been hacked and the user needs to download a "new program", (which contains a remote access program the scammer can use to steal info). Others claims the recipient has died and a family member has submitted a death certificate to gain access to their password vault. A link in the email, supposedly to stop the request, leads to a fake page that asks for the user's master password. Stealing someone's password manager credentials gives attackers access to every login stored inside. Remember, never enter your master password on links received via email or text. Only log into your password manager via official apps or bookmarks.



Click below for more information about password manager phishing scams.

[Read More](#)



4605 E Galbraith Road, Suite 200  
Cincinnati, OH 45236  
(513) 898-9100

[www.touchpointwealthpartners.com](http://www.touchpointwealthpartners.com)

Advisory Services offered through Valmark Advisers, Inc. a SEC Registered Investment Advisor  
Securities offered through Valmark Securities, Inc. Member FINRA, SIPC 130 Springside Drive, Suite 300  
Akron, Ohio 44333-2431 1-800-765-5201  
TouchPoint® Wealth Partners is a separate entity from Valmark Securities, Inc. and Valmark Advisers, Inc.

TouchPoint® Wealth Partners | 4605 E Galbraith Rd Suite 200 | Cincinnati, OH 45236 US

[Unsubscribe](#) | [Update Profile](#) | [Constant Contact Data Notice](#)



Try email marketing for free today!